

Image Access Scanners

Intelligent Products Driven by Design and Function



Introducing
Bookeye® 5!

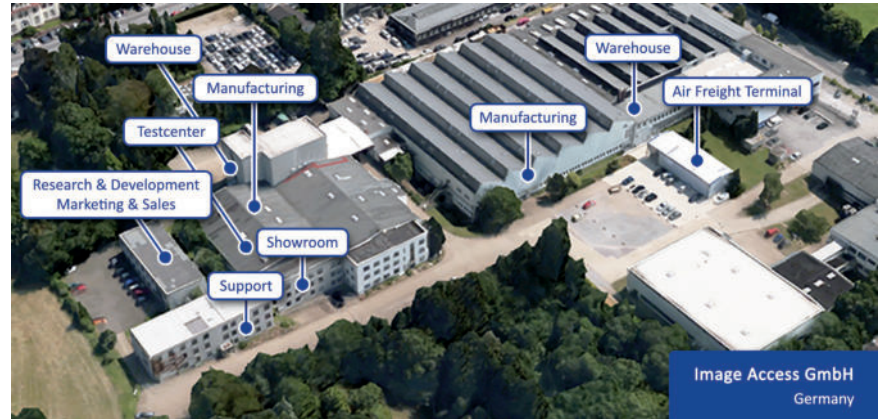


Product Catalog 2020



World Headquarters

Image Access GmbH
Hatzfelder Straße 161-163
42281 Wuppertal, Germany
Phone: +49 (202) 270 580



U.S. Headquarters

Image Access LP
2511 Technology Drive, Suite 109
Elgin, IL 60124 USA
Phone: +1 (224) 293-2585

For more information, visit us at:

www.imageaccess.de
www.imageaccess.us



SCAN ME!

©03/2020 by Image Access GmbH. All rights reserved. Scan2Net®, Scan2Pad®, Bookeye® and WideTEK® are registered trademarks in the United States, Europe and other countries. All other brand names and trademarks are property of their respective owners. All specifications are subject to change without notice.

WideTEK® 36 scans documents up to 36 inches wide (915 mm). State of the art illumination using bright white LEDs guarantees long lifetime and allow low cost of ownership, since there are practically no consumables necessary over the life of the product. Cutting edge camera technology and a dust-protected, fully sealed camera box holding CCD systems which use a patented stitching procedure, delivers a resolution of up to 1200 dpi optical. A recently developed user exchangeable black or white background drum never touches the glass plate.

Scanner Optics	CCD camera, scans in color, grayscale, B&W
Resolution	1200 x 1200 dpi scanner resolution 1200 x 600 dpi optical resolution 9600 x 9600 dpi interpolated (optional)
Document Size	950 mm (37.4 inch) width feed, nearly unlimited lengths in „endless mode“. Scans 915 mm (36 inch) widths
Scanning Speed	200 dpi - 22.9 m/min (15 inch/s) 600 dpi - 6 m/min (4 inch/s)
Color Depth	48 bit color, 16 bit grayscale
Scan output	24 bit color, 8 bit grayscale, bitonal, enhanced half-tone
Output Formats	Multipage PDF (PDF/A) and TIFF, JPEG, JPEG 2000, PNM, PNG, BMP, TIFF (Raw, G3, G4, LZW, JPEG), AutoCAD DWF, JBIG, DjVu, DICOM, PCX, Postscript, EPS, Raw data
Size H x W x D & Weight	228 x 1095 x 507 mm (9 x 43.1 x 20 inches) 41 kg (90 lbs.)
Quality (min.)	ISO 19264-1 level B, FADGI ***, Metamorfoze
Power Consumption	< 0.5 W (Sleep) / 5.2 W (Standby) / 50 W (Ready to scan) / 95 W (Scanning)

WideTEK® 36



- ✓ Face up scanning with on the fly rotation and modification of images without rescanning. Automated crop & deskew.
- ✓ Scans 36 inch widths, feeds 37.4 inch widths, nearly unlimited lengths (scans in „endless mode“)
- ✓ Real time display of images and modification, no rescanning
- ✓ Fastest color scanning at 200 dpi, 15 inches per second
- ✓ Touchscreen enhanced versions of ScanWizard, PrintWizard and EasyScan
- ✓ Scan2USB for walk up scanning to USB 3.0, Scan2Print for output to any connected printer, Scan2Network for output to network drives, Scan2FTP, Scan2Mail
- ✓ Large 22“ full HD color touchscreen for simplified operation
- ✓ Easy installation via Scan2Net® technology

WideTEK® Adjustable Stand

The new WideTEK® stand, WT-STAND-ADJ is a fully adjustable stand that accepts printers of any width and up to 1180mm (46,5") high. The height of the stand can be lowered to 880mm (34,5"). It supports the WideTEK® 36CL and WideTEK® 48CL scanners, which when mounted to the stand, can be moved toward the front on telescopic guides. The design is not only very stable but also can invisibly hold the power supply, a network switch and a power extension bar in the back of the lower crossbar.

- ✓ Most versatile MFP stand in the industry
- ✓ Any width printer, up to 1180mm (46,5") high
- ✓ Fast copy to HP, Canon, Epson and Océ printers
- ✓ Sits against a wall, leveled via adjustable feet
- ✓ Slightly angled forward for convenient access by operators





Mobile Scanning via Tablet Changes the Way You Work

The Scan2Pad® application allows Image Access scanners to be controlled and operated using an iPad or an Android tablet or a smartphone running Android version 3.2 or higher or an iPhone. Experience a new way to work with our book and large format scanners and see how simple it is to configure and operate them using our mobile application Scan2Pad®.

Scan2Pad® is available for the iPad free of charge in the iTunes Store. The Android version of Scan2Pad® is also available at no cost from the Google Play Store. Look for the App „Scan2Pad“ or simply search for Bookeye® or WideTEK®.

Scan2Pad® supports all book scanners and book copiers with the brand name Bookeye® as well as all WideTEK® wide format scanners. The latest generation of scanners such as the Bookeye® 4, the WideTEK® 36 or the flatbed scanner WideTEK® 25 can be addressed as separate wireless access points, making them ideal for use with multiple systems in the public domain.



- ✓ Quickly adjust the color depth, from black & white to grayscale or full color
- ✓ Simplified brightness controls
- ✓ Automatic page splitting
- ✓ Single step creation of scanned pages as JPEG and PDF files
- ✓ Print quality copies of scans wirelessly via AirPrint (with iOS & AirPrint enabled printer)
- ✓ Mail directly from the App
- ✓ Upload the PDF to your iBook* library (*for iOS)
- ✓ Synchronize scanned documents to the iCloud* (*for iOS)
- ✓ Offline processing of scan jobs

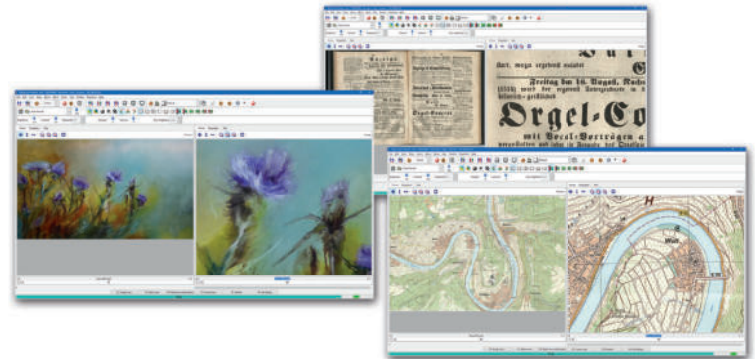


BatchScanWizard is a fast and easy to use software solution from Image Access for professional management of large scanning volumes and jobs. The software increases data throughput and reduces operational tasks substantially. BatchScanWizard is ideal for processing large volume scanning jobs but is just as useful for smaller volumes in which more advanced operations like page splitting or extracting specific areas on a document is required. A batch is started either using the foot switch or the user interface of the BatchScanWizard.

In addition to being able to set standard scan parameters such as brightness, contrast, color mode or file format; BatchScanWizard includes Scan Tool, for predefining regions in a document to extract, scan and save as separate images. A previously scanned document can be modified and the resulting image quality improved without having to rescan.

The operator can configure frequently used functions and operations on hotkeys and activate them with the single press of a key. Even complex operations can be configured for hotkeys.

BatchScanWizard is available for purchase and for download online in the Customer Service Portal.



- ✓ Automated scanning of high volume source documents
- ✓ Easy configuration with templates
- ✓ Manage scan parameters in jobs
- ✓ On the fly modification of scanned images
- ✓ Hotkeys - frequently used operations at the press of a key
- ✓ Scan Tool - scan user definable sections of source documents
- ✓ Variable page splitting
- ✓ Time saving, high data throughput, perfect for production
- ✓ Purchase and download from Image Access Customer Service Portal



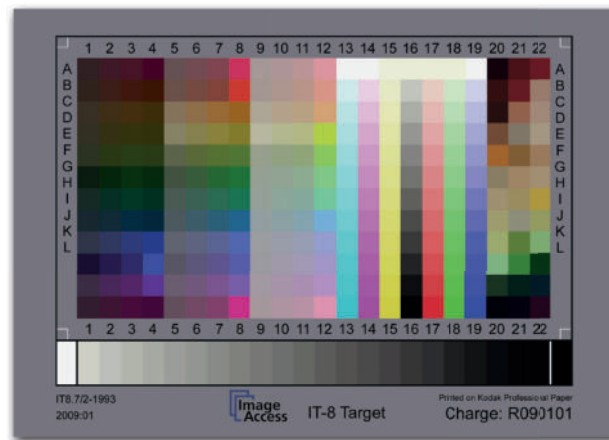
Scan2OCR is an optional software function which allows the user to scan in job mode and to OCR the entire page or multiple pages scanned, using multipage PDF mode. The OCR process runs in the background so that you can continue scanning subsequent pages in the job. This function is useful when scanning complete source material such as books, legal files and other multipage documents for which the operator wants all of the text OCR'd.

Scan2OCR is based on the Tesseract OCR engine and the layout analysis software Leptonica. The Tesseract engine is considered one of the best OCR software engines available and currently supports more than 100 languages, including many from Asia.

The OCR engine runs in the background at a low priority level and uses all remaining computing power. The multitasking software will not slow down the scanning process. Many language packages can be downloaded for free from our portal and installed on the target scanner.



Scan2ICC is an online tool for creating and storing an individual ICC profile for a single Scan2Net® scanner. This service is a simple, cost efficient alternative to expensive, complicated third party software.



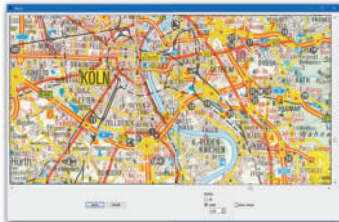
- ✓ Subscription for individual ICC profile for each Scan2Net® scanner
- ✓ True color output for copy applications
- ✓ Clear and simple operation
- ✓ Cost efficient subscription, available for purchase on the Customer Service Portal or ask for pricing

PerfectStitch



**The Easiest Way to
Make One Out of Two!**

**Download your trial version
from our homepage today!**



The PerfectStitch software add-on from Image Access is the easiest to use, most intuitive solution for fast and accurate stitching of two or more JPEG and TIFF images.

The high quality images generated by Image Access scanners can be stitched together perfectly in three simple steps. Double the scan area of your Image Access Scanner with PerfectStitch!

BCS-2[®]

BCS-2[®] is a solution for digitizing, post-processing and electronic publishing books, magazines and maps. BCS-2[®] can be used to control book scanners, flatbed, sheetfeed and microfilm scanners and copiers. The scan results of the job processes are seamlessly passed into workflow systems.

Applications

- Electronic document delivery: production of digitized material
- Internet / Intranet publication, access to e-mail systems
- Connection to CMS, DMS, archive and workflow systems

Order Management

- Integrated Order Management
- Management and export, and (re-) import of jobs
- Configurable profiles
- Editing, printing, and deleting jobs

- ✓ User defined formats, profiles for different styles, batch scanning of large volumes of documents and books
- ✓ Black border removal and deskew
- ✓ Automatic rotation after scanning - zoom, rotate, invert
- ✓ Thumbnails to view all scans in a scan job
- ✓ Format adaptation of different sizes on a target format template
- ✓ Flexible cropping, masking and page splitting
- ✓ MAPI interface for applications such as MS Outlook/Exchange, Lotus Notes, Mozilla Thunderbird, etc.
- ✓ Print jobs for single image, entire orders and printing and scanning in parallel

Worldwide Quality, Safety & Environment Certifications

Image Access scanners are environmentally friendly, comply to the highest security standards and do not interfere with other devices. We have also made sure that no harmful radiation in the form of electromagnetic emission and UV or infrared light exists. Because these kinds of scanners are heavy production machines with inherent risks to the operator, no one should operate a scanner from a vendor who cannot provide at least a safety report according to IEC/EN 62368.

Image Access scanners conform to the many national and international standards. Our scanners have been tested and certified by independent laboratories and we can also provide test reports of each standard on paper upon request.



Image Access GmbH
Hatzfelder Strasse 161-163
42281 Wuppertal
Germany

www.imageaccess.de



Image Access LP
2511 Technology Drive
Elgin, IL 60124
USA

www.imageaccess.us